



LAKEFRONT 17 BUILDING

5570 STERRETT PLACE | COLUMBIA, MARYLAND 21044

FOR
LEASE



MACKENZIE

COMMERCIAL REAL ESTATE SERVICES, LLC

PROPERTY OVERVIEW

HIGHLIGHTS:

- Several suites have woodland views
- Newly renovated lobby, hallways, and bathrooms
- Prime location near Columbia Lakefront and across from The Mall In Columbia
- Easy access to Route 29 and Route 175
- Plenty of parking



AVAILABLE:

SUITE 104: 871 - 2,354 RSF*

SUITE 210: 2,047 RSF

SUITE 300: 885 - 2,772 RSF

*DIRECT ENTRY WITH EXTERIOR BUILDING SIGNAGE

BUILDING SIZE:

32,358 SF

PARKING:

4/1,000 SF

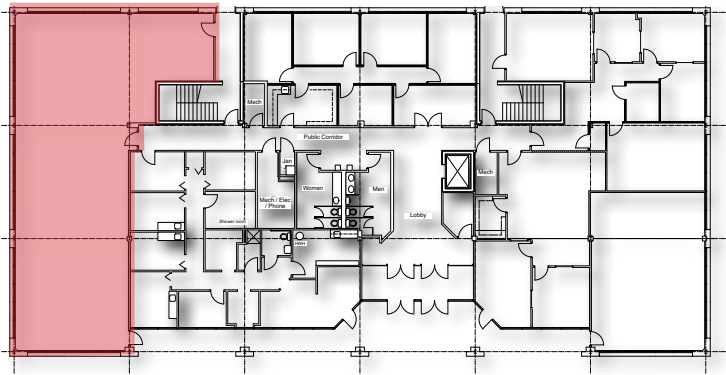
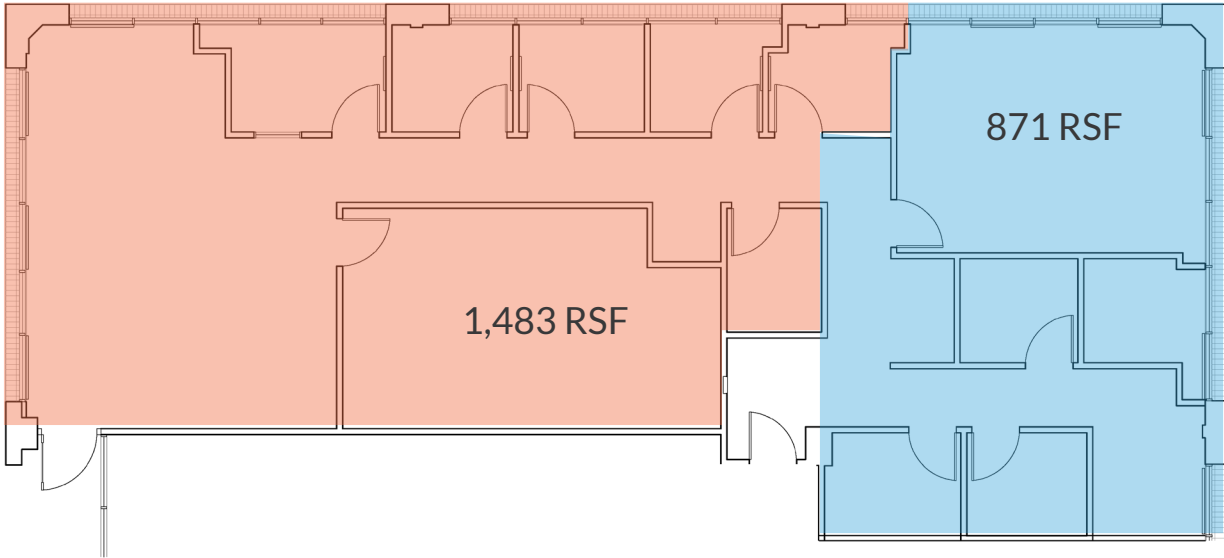
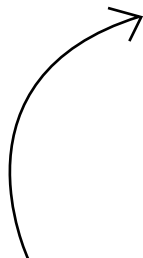
RENTAL RATE:

WITHHELD



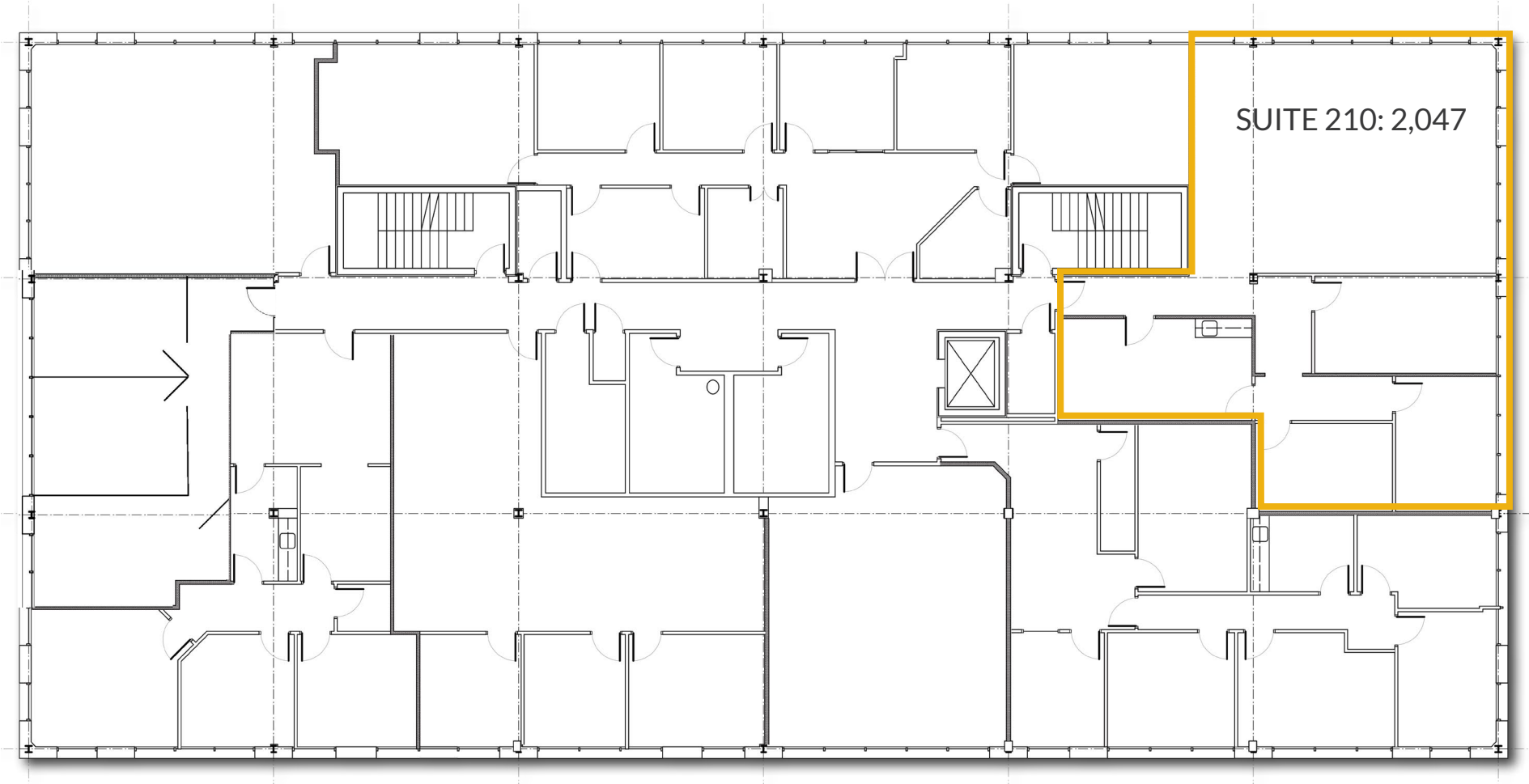
FLOOR PLAN

SUITE 104
2,354 SF



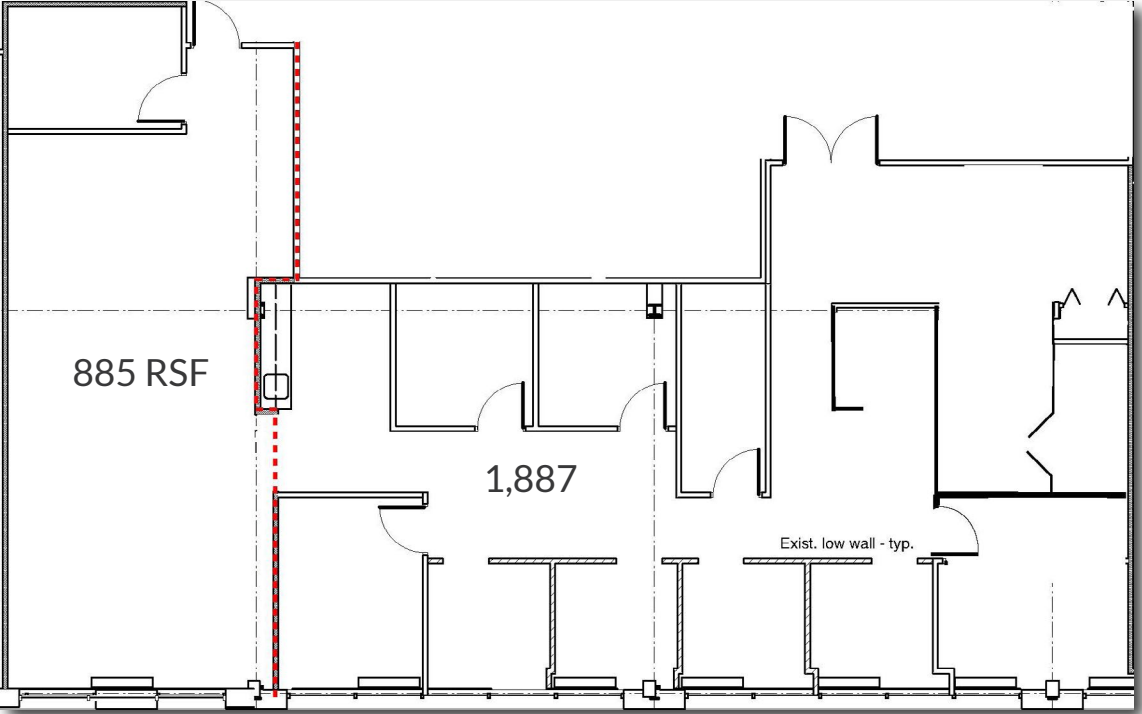
FLOOR PLAN

SECOND FLOOR



FLOOR PLAN

THIRD FLOOR



SUITE 300: 885 - 2,772 RSF

LOCAL BIRDSEYE



SITE

Exxon

AUTOGRAPH
COLLECTION
HOTELS

GrillMare
STEAKHOUSE & RAW BAR

SUSHI SONO

**WHOLE
FOODS
MARKET**

THE MALL
IN COLUMBIA

NORDSTROM

★ macy's

JCPenney

SHAKE SHACK

CHIPOTLE MEXICAN GRILL

LORD + TAYLOR

Starbucks

The Cheesecake Factory

Chick-fil-A

BIBIBOP

LIDL



FOR MORE INFO **CONTACT:**



BETHANY HOBBS

VICE PRESIDENT

410.953.0359

BHOBBS@mackenziecommercial.com

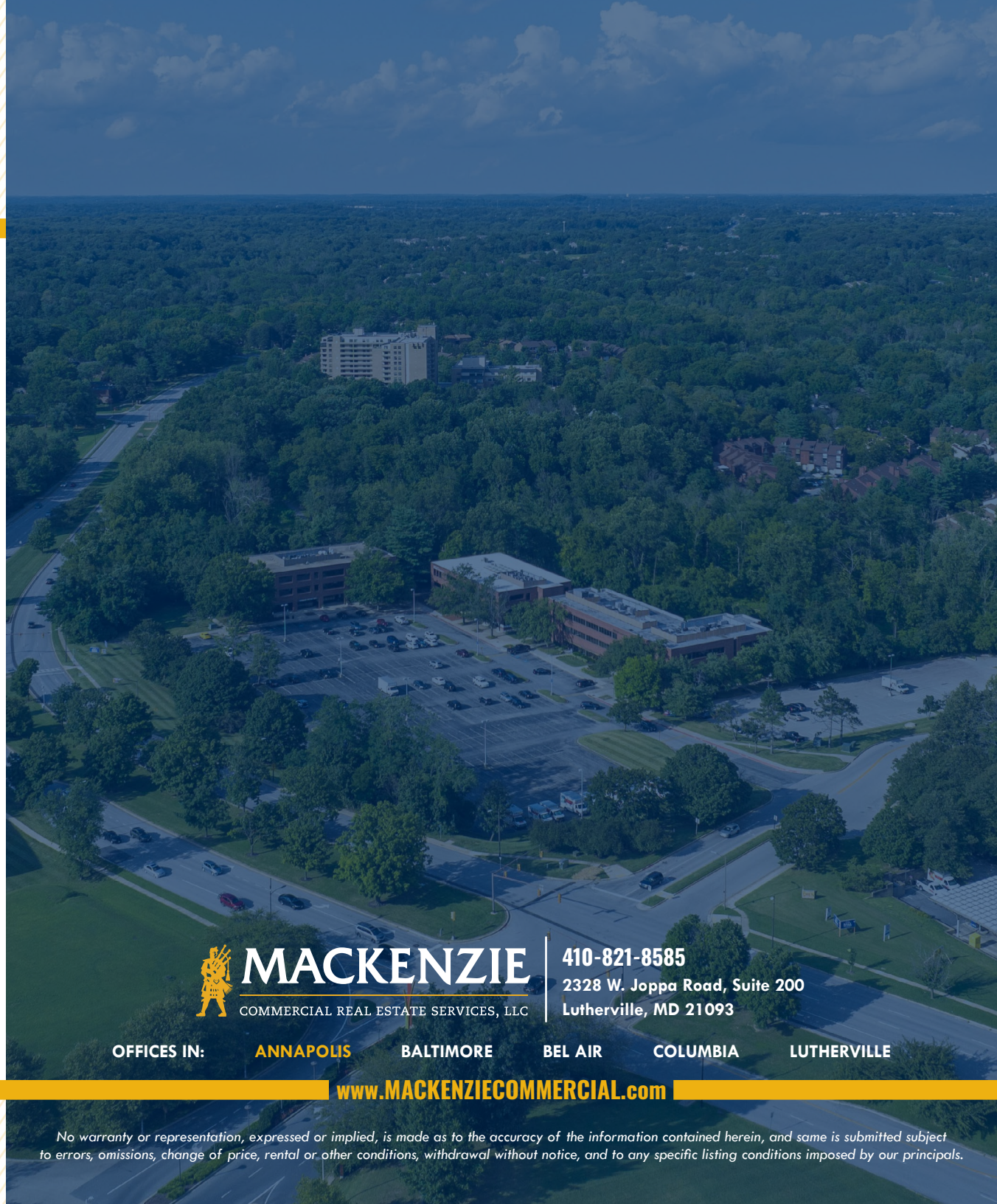


MORGAN WIMBROW

SENIOR REAL ESTATE ADVISOR

410.494.4846

MWIMBROW@mackenziecommercial.com



MACKENZIE

COMMERCIAL REAL ESTATE SERVICES, LLC

410-821-8585

**2328 W. Joppa Road, Suite 200
Lutherville, MD 21093**

OFFICES IN:

ANNAPOLIS

BALTIMORE

BEL AIR

COLUMBIA

LUTHERVILLE

www.MACKENZIECOMMERCIAL.com



VISIT **PROPERTY PAGE** FOR MORE INFORMATION.

No warranty or representation, expressed or implied, is made as to the accuracy of the information contained herein, and same is submitted subject to errors, omissions, change of price, rental or other conditions, withdrawal without notice, and to any specific listing conditions imposed by our principals.