



AIRPORT SQUARE XXI

849 INTERNATIONAL DRIVE | LINTHICUM HEIGHTS, MARYLAND 21090

FOR
LEASE



MACKENZIE

COMMERCIAL REAL ESTATE SERVICES, LLC

PROPERTY OVERVIEW

HIGHLIGHTS:

- Third floor office suite available with new paint and flooring
- Overlooks green space
- Nicely finished lobby with live greenery
- Close proximity to BWI and major highways
- Easily divided into smaller suites



BUILDING SIZE:

68,488 SF ±

AVAILABLE:

SUITE 400: 500 - 4,000 SF ±
2ND FLOOR: 17,989 SF ±
(AVAILABLE 10/1/2024)

STORIES:

4

PARKING:

SURFACE (200 SPACES)

ZONING:

W1 (INDUSTRIAL PARK)

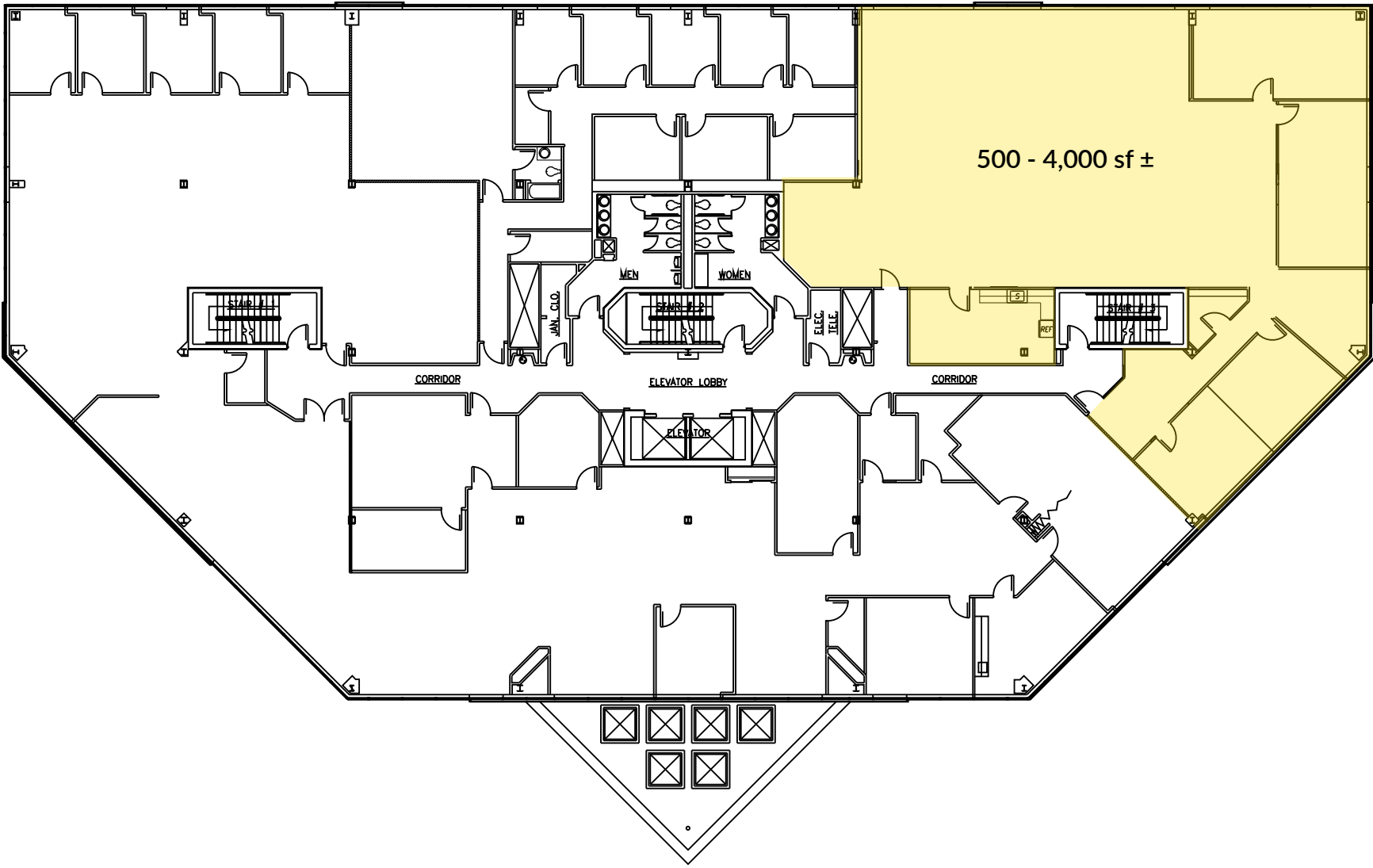
DATE AVAILABLE:

IMMEDIATELY



GOOGLE STREET VIEW

FLOOR PLAN: SUITE 400

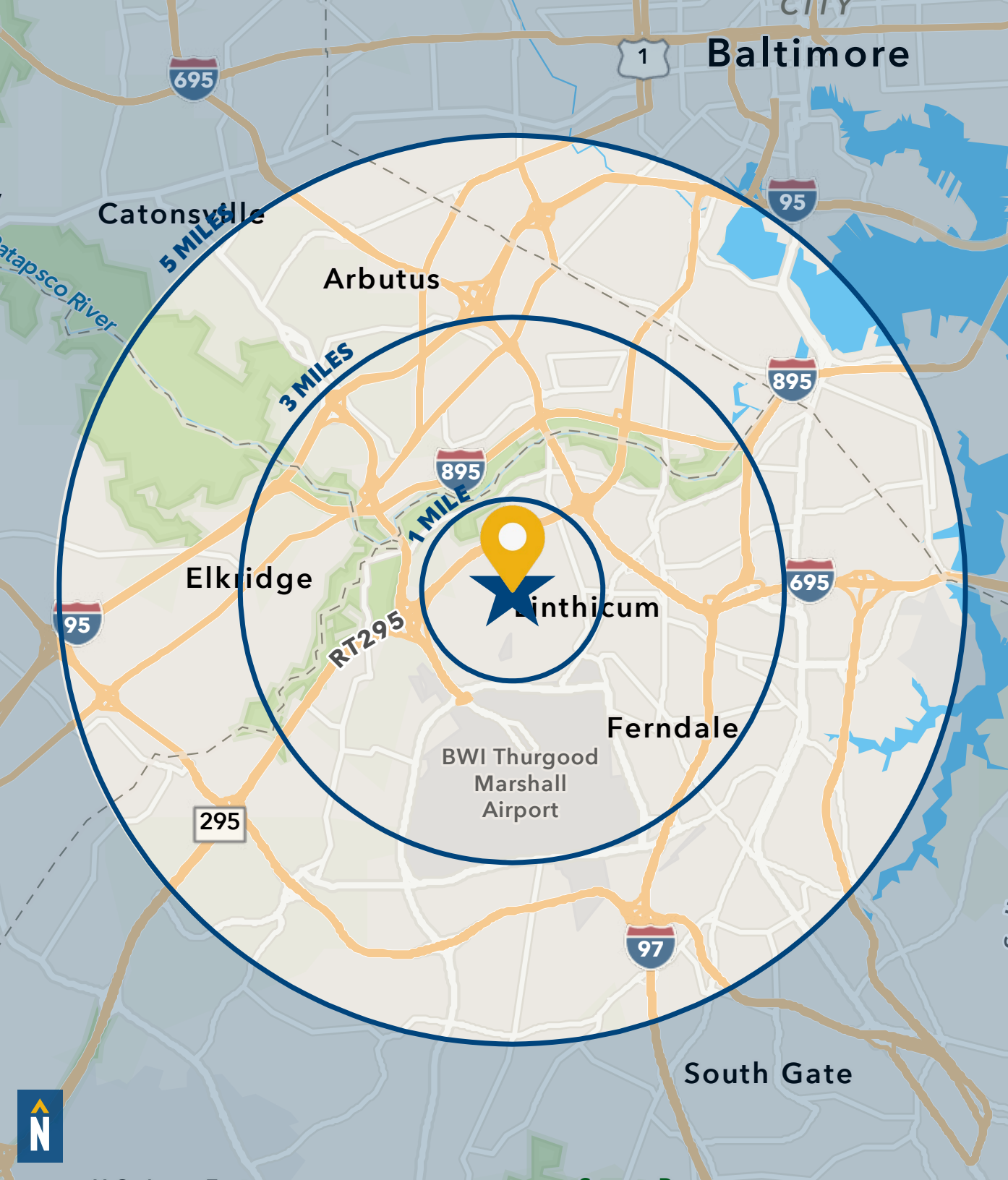


LOCAL BIRDSEYE



LOCAL TRADE AREA





DEMOGRAPHICS

2024

RADIUS: **1 MILE** **3 MILES** **5 MILES**

RESIDENTIAL POPULATION



DAYTIME POPULATION



AVERAGE HOUSEHOLD INCOME



NUMBER OF HOUSEHOLDS



MEDIAN AGE



[FULL DEMOS REPORT](#)



FOR MORE INFO **CONTACT:**



PATRICK SMITH, SIOR

VICE PRESIDENT

410.494.4866

PSMITH@mackenziecommercial.com



CHRIS BOLAND

VICE PRESIDENT

410.494.6644

CBOLAND@mackenziecommercial.com



MACKENZIE

COMMERCIAL REAL ESTATE SERVICES, LLC

410-821-8585

2328 W. Joppa Road, Suite 200

Lutherville, MD 21093

OFFICES IN: ANNAPOLIS, MD BALTIMORE, MD BEL AIR, MD COLUMBIA, MD **LUTHERVILLE, MD** CHARLOTTESVILLE, VA

www.MACKENZIECOMMERCIAL.com



VISIT **PROPERTY PAGE** FOR MORE INFORMATION.

No warranty or representation, expressed or implied, is made as to the accuracy of the information contained herein, and same is submitted subject to errors, omissions, change of price, rental or other conditions, withdrawal without notice, and to any specific listing conditions imposed by our principals.