



# 1ST FLOOR OFFICE SUITE

5800 METRO DRIVE | BALTIMORE, MARYLAND 21215

FOR  
LEASE



**MACKENZIE**

COMMERCIAL REAL ESTATE SERVICES, LLC



# PROPERTY OVERVIEW

## HIGHLIGHTS:

- 3,253 square foot  $\pm$  1st floor office suite
- Easy access to Reisterstown Road/Route 140, Liberty Road/Route 26, I-695 and I-795
- Short drive to Reisterstown Plaza and Rogers Avenue Metro stations
- Close proximity to numerous retail, service, dining and entertainment options in surrounding NW Baltimore City trade area

AVAILABLE:

3,253 SF  $\pm$  (1ST FLOOR)

BUILDING SIZE:

21,208 SF  $\pm$

YEAR BUILT:

1986

STORIES:

2

PARKING:

100 SURFACE SPACES (5.00/1,000 SF)

ZONING:

OIC (OFFICE-INDUSTRIAL CAMPUS DIST.)

RENTAL RATE:

\$20.50 PSF, NET OF JANITORIAL



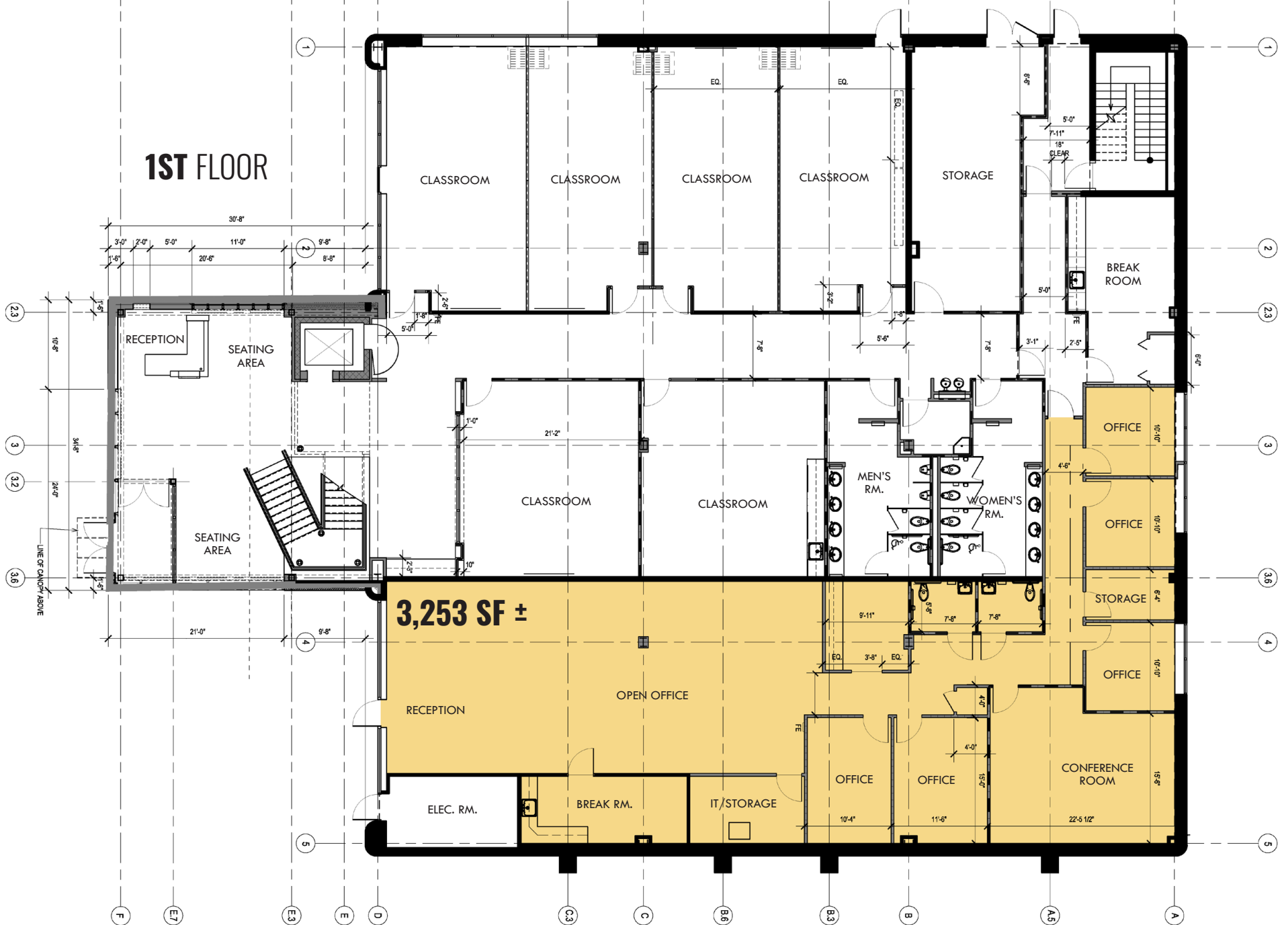


# AERIAL





# FLOOR PLAN





# INTERIOR PHOTOS





# LOCAL BIRDSEYE



**SITE**

FDA U.S. FOOD & DRUG ADMINISTRATION

American Red Cross

Davita

SOCIAL SECURITY ADMINISTRATION

REISTERSTOWN METRO STATION

DISTRICT COURT FOR BALTIMORE CITY

MTA Maryland

Roses

DOLLAR TREE

HARVEST PARK Supermarket

FutureCare

polk

mecu CREDIT UNION

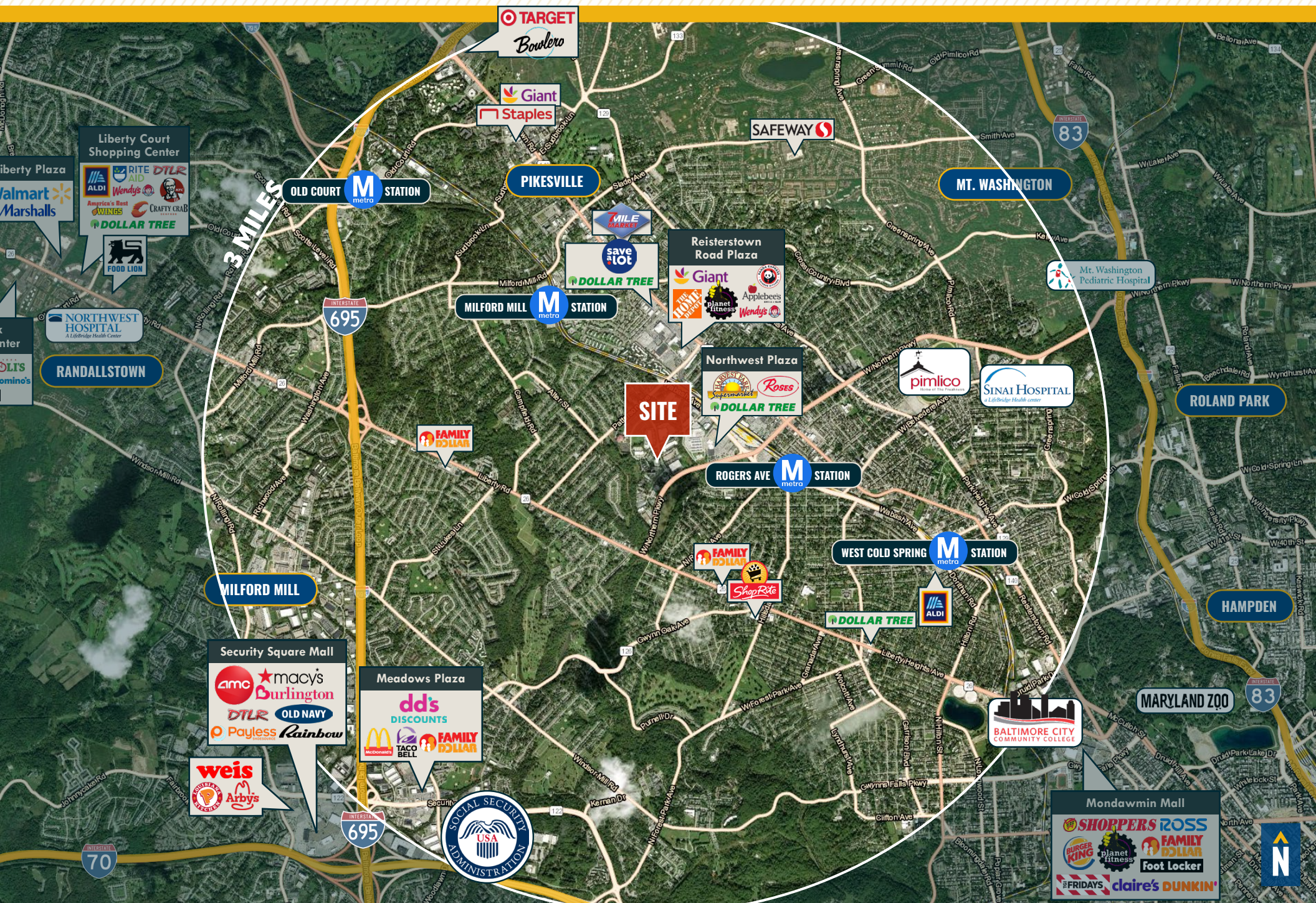
METRO DR

W NORTHERN PKWY





# MARKET AERIAL





# DEMOGRAPHICS

2023

RADIUS:

1 MILE

2 MILES

3 MILES

## RESIDENTIAL POPULATION



15,373

76,661

148,021

## DAYTIME POPULATION



21,534

71,200

151,226

## AVERAGE HOUSEHOLD INCOME



\$73,602

\$83,107

\$87,737

## NUMBER OF HOUSEHOLDS



6,310

30,875

60,132

## MEDIAN AGE

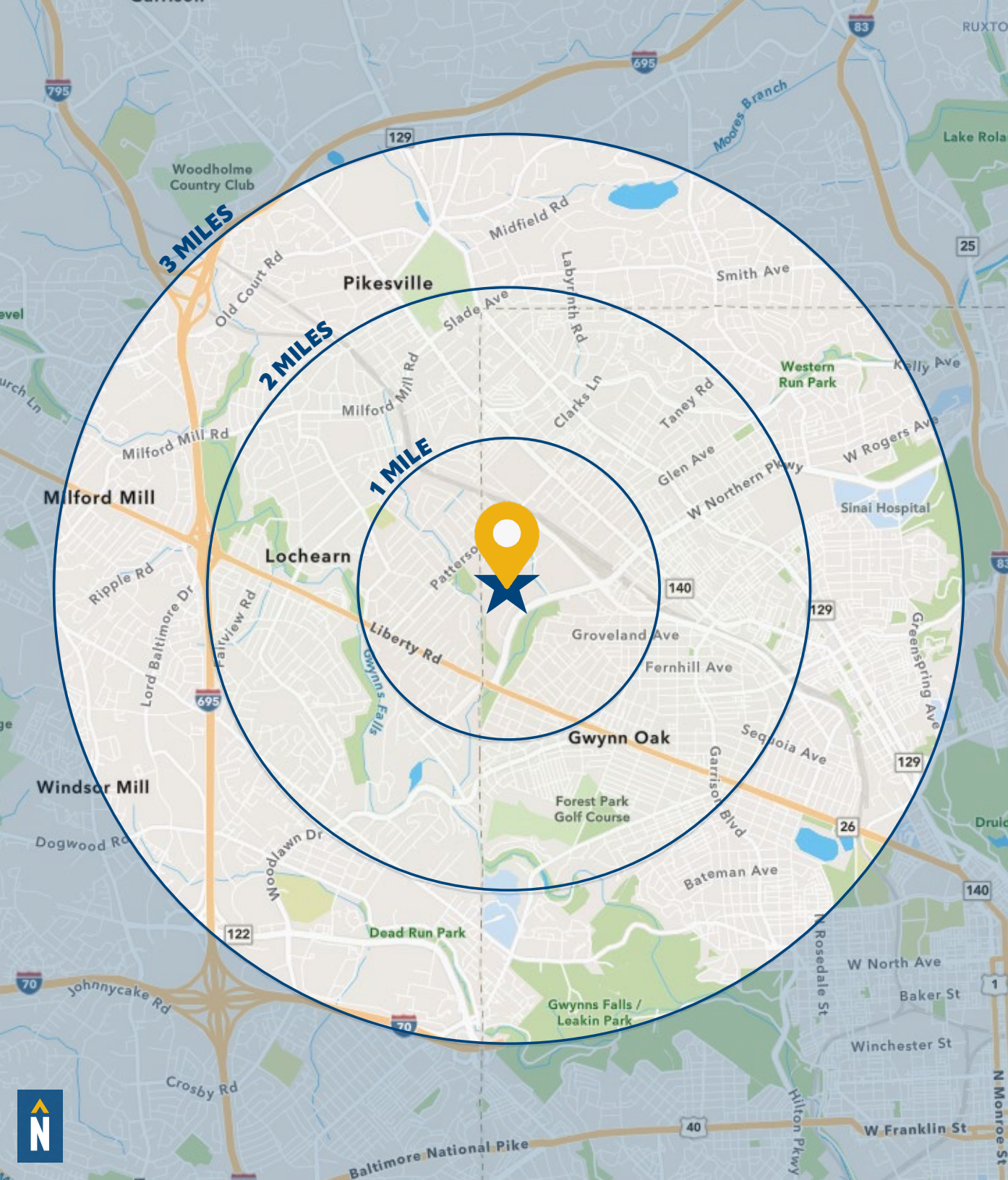


46.0

42.8

42.0

[FULL DEMOS REPORT](#)





# FOR MORE INFO CONTACT:



**JIM GRIEVES**

VICE PRESIDENT

**443.573.3202**

**JGRIEVES@mackenziecommercial.com**



**MACKENZIE**

COMMERCIAL REAL ESTATE SERVICES, LLC

**443-573-3200**

111 S. Calvert Street  
Baltimore, MD 21202

OFFICES IN: ANNAPOLIS **BALTIMORE** BEL AIR COLUMBIA LUTHERVILLE

[www.MACKENZIECOMMERCIAL.com](http://www.MACKENZIECOMMERCIAL.com)



VISIT **PROPERTY PAGE** FOR MORE INFORMATION.

*No warranty or representation, expressed or implied, is made as to the accuracy of the information contained herein, and same is submitted subject to errors, omissions, change of price, rental or other conditions, withdrawal without notice, and to any specific listing conditions imposed by our principals.*