



5424 CARVILLE AVE

ARBUTUS, MARYLAND 21227

FOR
SALE



INCLUDES 0.08 AC ± PARKING LOT
WITH 13 PARKING SPACES



MACKENZIE

COMMERCIAL REAL ESTATE SERVICES, LLC

PROPERTY OVERVIEW

HIGHLIGHTS:

- Close proximity to BWI Airport, The University of Maryland Baltimore County (UMBC)/ Chesapeake Employers Insurance Arena and Community College of Baltimore County – (CCBC – Catonsville)
- Easy access to I-95, I-195 and I-695
- Many amenities within walking distance including Rite Aid, DePaola's Pub & Grill, OCA Mocha, Taste Tea, and more
- Sale includes parking lot with 13 spaces located just across the street
- The Fall 2024 Enrollment number for UMBC is 13,906 total students

BUILDING SIZE: 2,240 SF ±

LOT SIZE: 0.04 & 0.08 (0.12 TOTAL) ACRES ±

PARKING: 13 SPACES - DESIGNATED LOT

ZONING: BL (BUSINESS LOCAL)

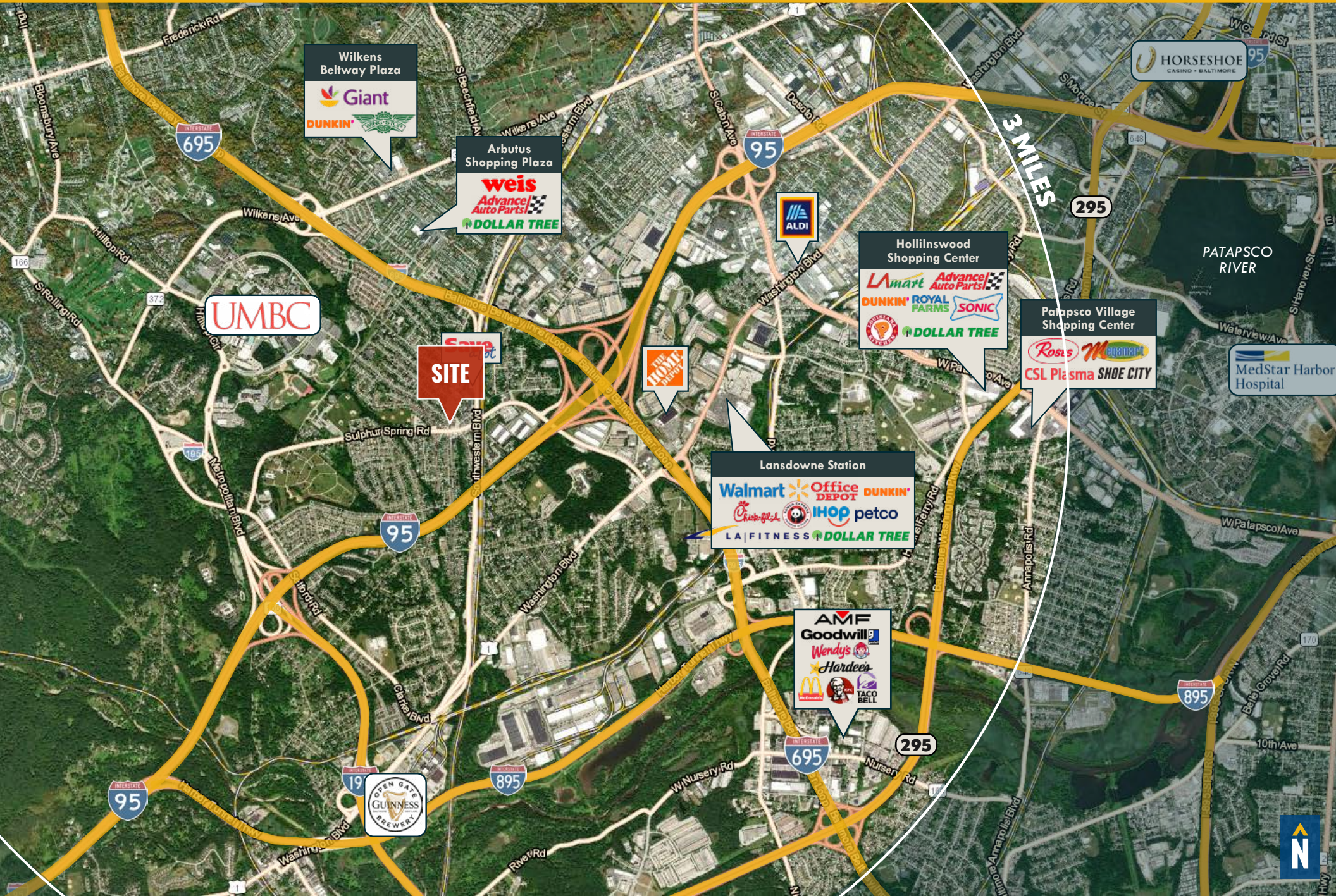
SALE PRICE: \$570,000



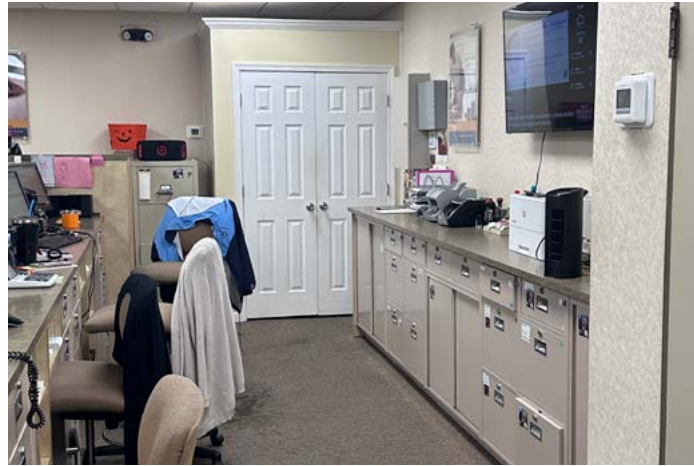
GOOGLE STREET VIEW



TRADE AREA



ADDITIONAL PHOTOS



PARCELS



0.04 AC ±

0.08 AC ±

POPLAR AVE

EAST DR

11,871 AADT

CARVILLE AVE

SULPHUR SPRING RD

21,411 AADT



DEMOGRAPHICS

2024

RADIUS:

1 MILE

2 MILES

3 MILES

RESIDENTIAL POPULATION



13,924

41,560

98,678

DAYTIME POPULATION



14,076

47,688

103,885

AVERAGE HOUSEHOLD INCOME



\$122,827

\$104,340

\$99,199

NUMBER OF HOUSEHOLDS



4,517

15,567

37,205

MEDIAN AGE

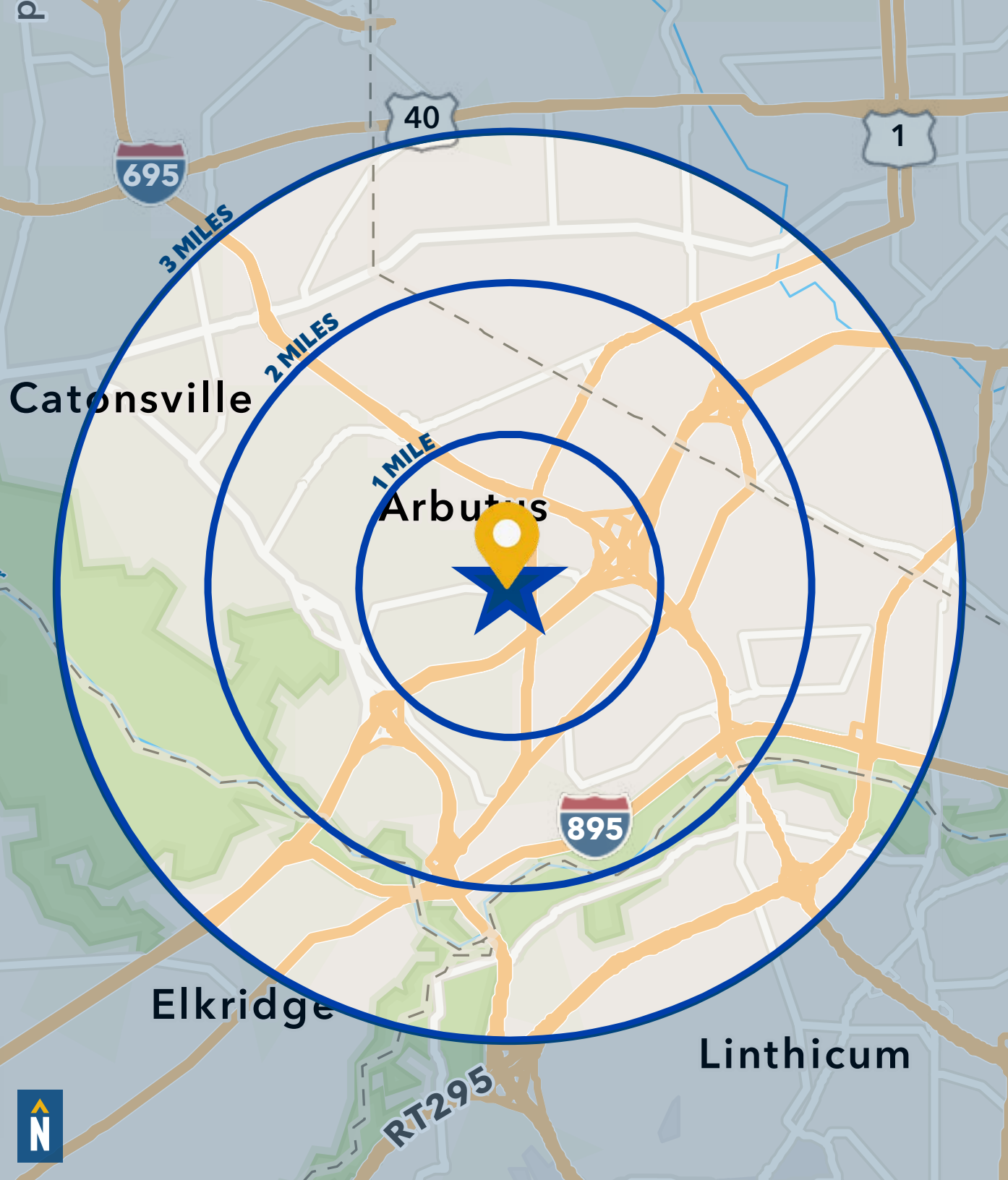


32.0

35.7

36.5

[FULL DEMOS REPORT](#)



FOR MORE INFO **CONTACT:**



KAREN DEELEY

SENIOR VICE PRESIDENT

410.494.4871

KDEELEY@mackenziecommercial.com



MACKENZIE

COMMERCIAL REAL ESTATE SERVICES, LLC

410-821-8585

**2328 W. Joppa Road, Suite 200
Lutherville, MD 21093**

OFFICES IN: ANNAPOLIS, MD BALTIMORE, MD BEL AIR, MD COLUMBIA, MD **LUTHERVILLE, MD** CHARLOTTESVILLE, VA

www.MACKENZIECOMMERCIAL.com



VISIT **PROPERTY PAGE** FOR MORE INFORMATION.



No warranty or representation, expressed or implied, is made as to the accuracy of the information contained herein, and same is submitted subject to errors, omissions, change of price, rental or other conditions, withdrawal without notice, and to any specific listing conditions imposed by our principals.