



HARVEST OFFICE BUILDING

2345 YORK ROAD | TIMONIUM, MD 21093

FOR
LEASE



MACKENZIE

COMMERCIAL REAL ESTATE SERVICES, LLC

PROPERTY OVERVIEW

HIGHLIGHTS:

- Free unreserved parking
- Small Suites available
- Great Location off of York Road access to a number of amenities
- Great Access to I-83 and I-695



AVAILABLE:

SUITE B12: 1,373 SF
SUITE B14: 593 SF
SUITE 101: 1,494 SF
SUITE 300: 2,657 SF

BUILDING SIZE:

29,500 SF

TRAFFIC COUNT:

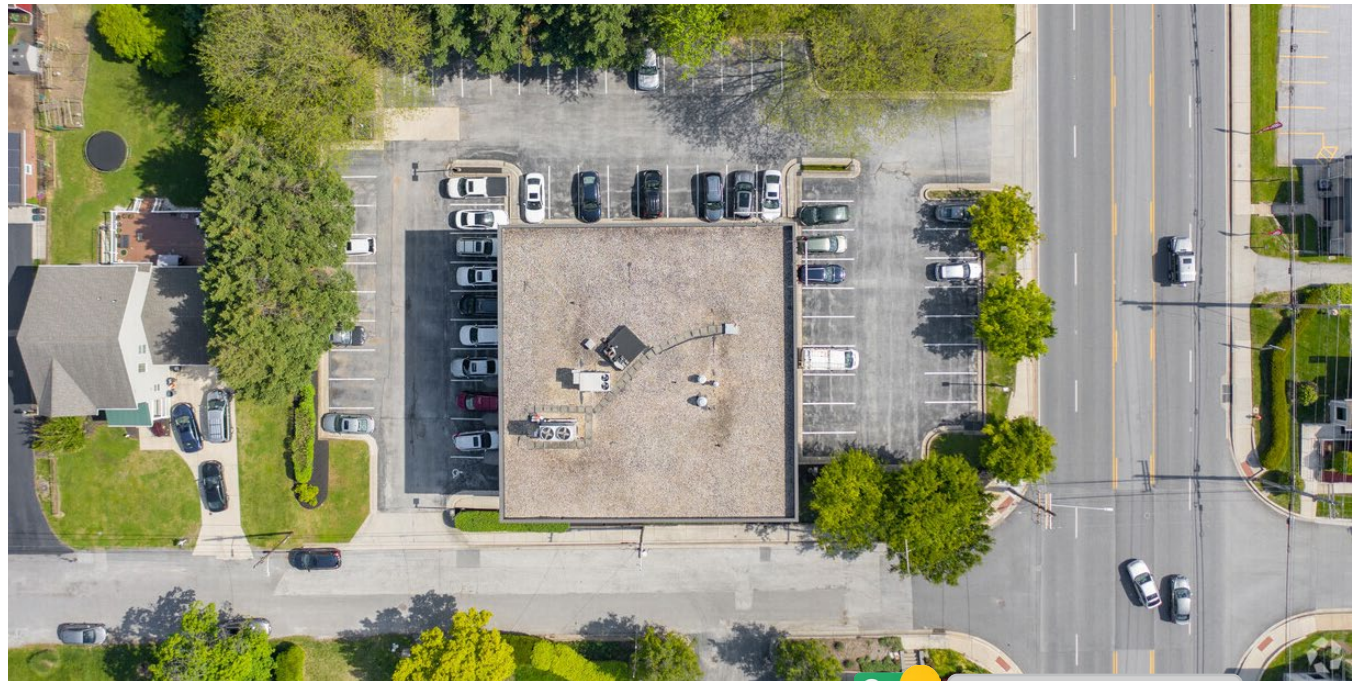
31,830 AADT (YORK RD/RT. 45)

ZONING:

OR-2

RENTAL RATE:

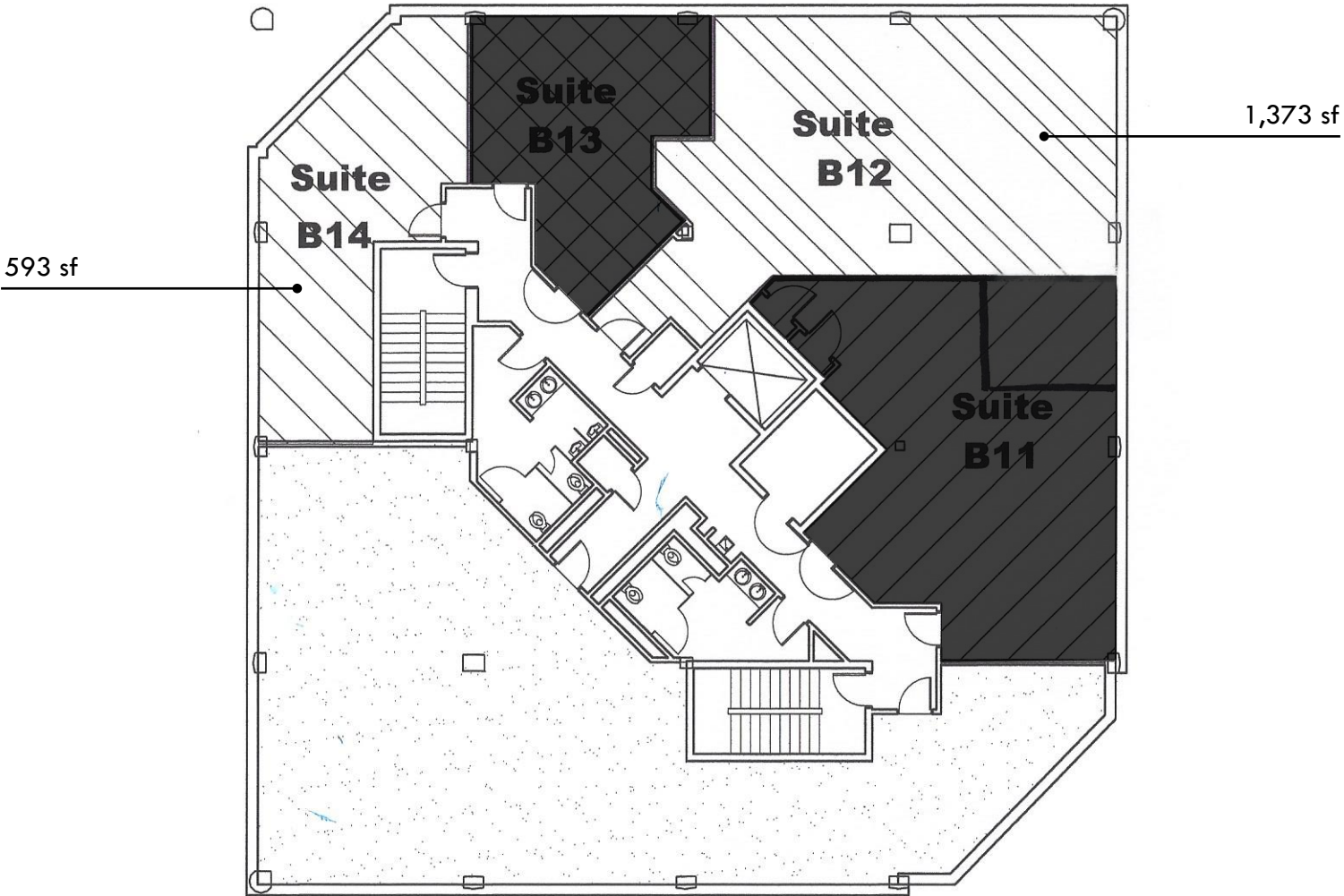
SUITE B12: \$15.00 SF FS
SUITE B14: \$15.00 SF FS
SUITE 101: NEGOTIABLE
SUITE 300: NEGOTIABLE



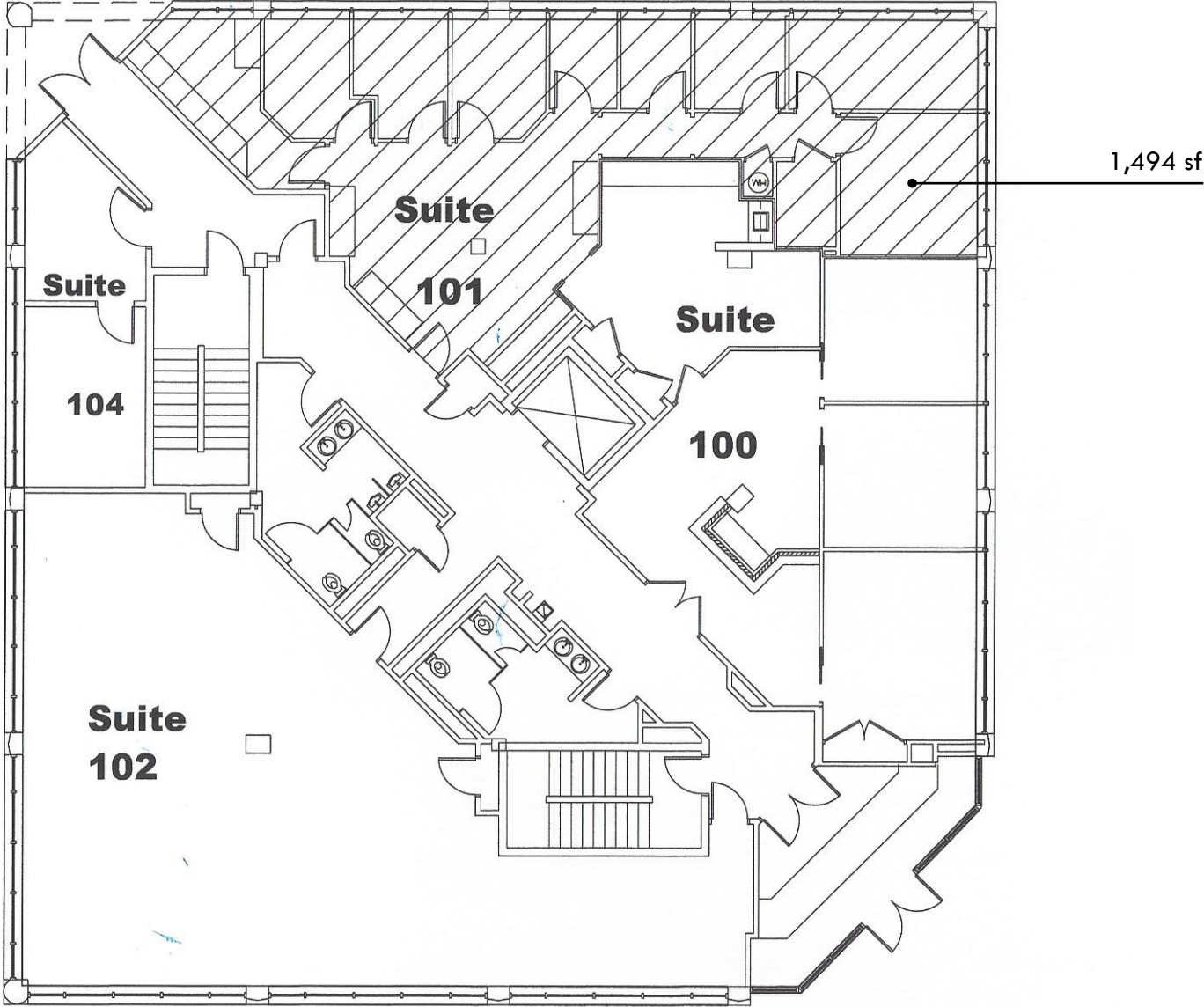
GOOGLE STREET VIEW



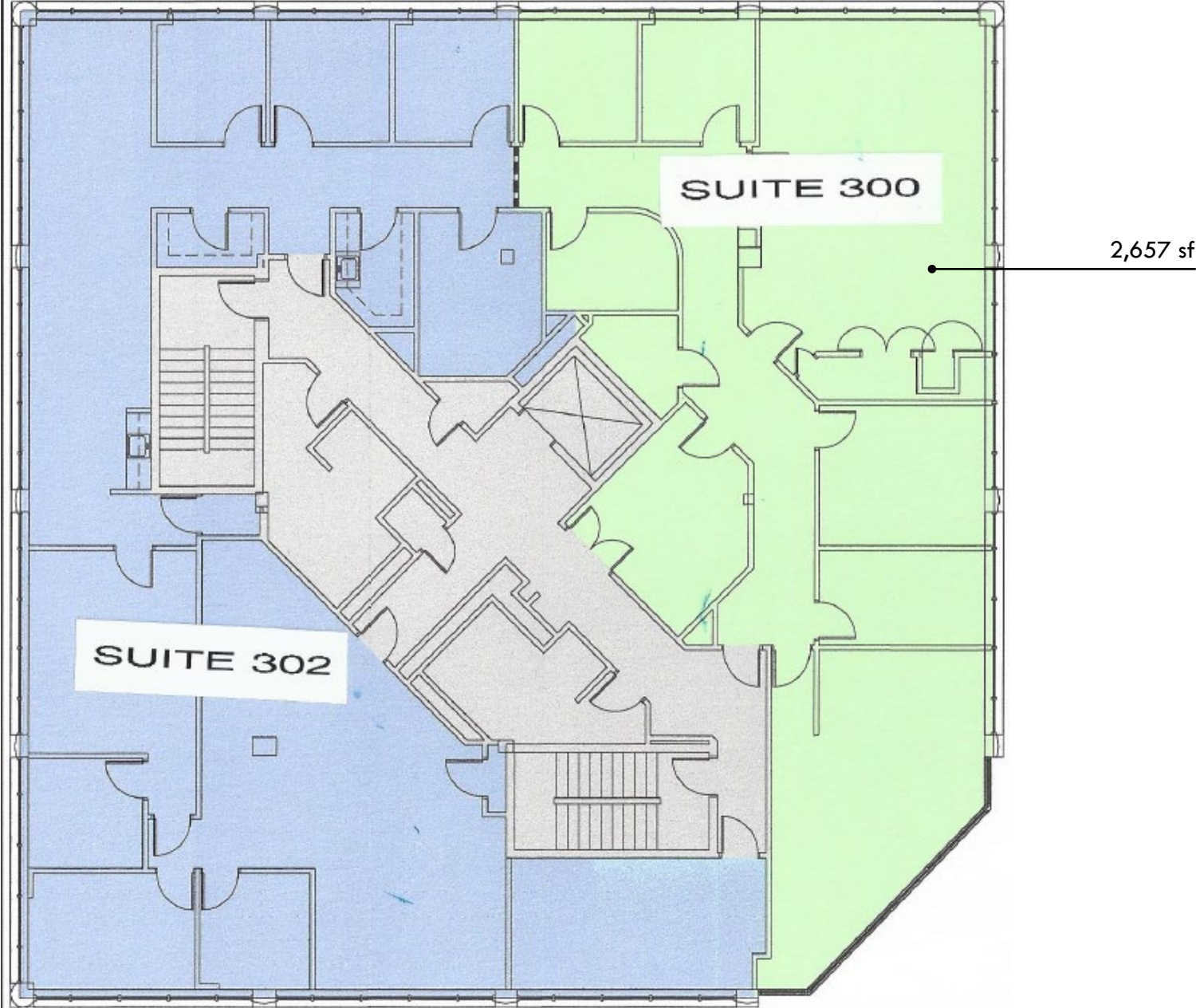
FLOOR PLAN: LOWER LEVEL



FLOOR PLAN: 1ST FLOOR



FLOOR PLAN: 3RD FLOOR



SUITE 300



LOCAL BIRDSEYE



INTERSTATE
83

E. PADONIA RD

TIMONIUM FAIRGROUNDS

WIGHTTOPPS
RaceStage

Entour-prince

BB Mothers
South Grafts

SITE

YORK RD

eggspection®

THE STILL
WATER



FOR MORE INFO **CONTACT:**



CHRIS BOLAND

SENIOR REAL ESTATE ADVISOR

410.494.6644

CBOLAND@mackenziecommercial.com

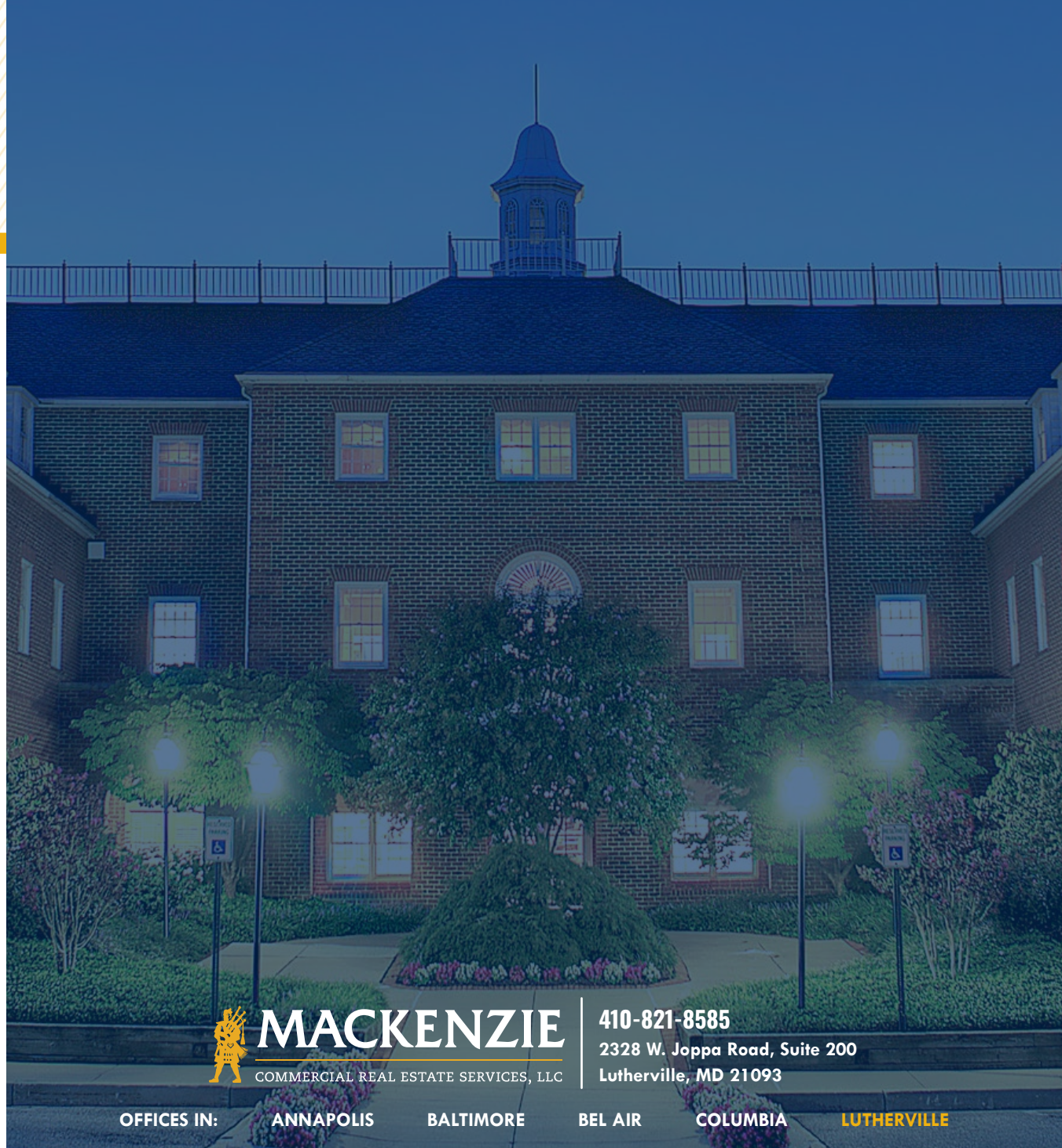


PATRICK SMITH, SIOR

VICE PRESIDENT

410.494.4866

PSMITH@mackenziecommercial.com



MACKENZIE

COMMERCIAL REAL ESTATE SERVICES, LLC

410-821-8585

**2328 W. Joppa Road, Suite 200
Lutherville, MD 21093**

OFFICES IN:

ANNAPOLIS

BALTIMORE

BEL AIR

COLUMBIA

LUTHERVILLE

www.MACKENZIECOMMERCIAL.com



VISIT **PROPERTY PAGE** FOR MORE INFORMATION.



No warranty or representation, expressed or implied, is made as to the accuracy of the information contained herein, and same is submitted subject to errors, omissions, change of price, rental or other conditions, withdrawal without notice, and to any specific listing conditions imposed by our principals.