



16 WILLOW AVENUE

TOWSON, MARYLAND 21286

FOR
LEASE



MACKENZIE

COMMERCIAL REAL ESTATE SERVICES, LLC

PROPERTY OVERVIEW

HIGHLIGHTS:

- 2,350 SF ± fully furnished turn-key office space
- 2 common area restrooms
- Ample surface parking on premises
- All Utilities, Real Estate Taxes, Insurance, Common Area Maintenance Fees included in Base Rent
- Within walking distance of the Towson Core and its many dining/shopping/service amenities
- Easy access to I-695 and I-83

BUILDING SIZE:

2,350 SF ± (SUITE B)

LOT SIZE:

0.4 ACRES ±

YEAR BUILT:

1930 (RENOVATED 2008)

STORIES:

1

PARKING:

18 SURFACE SPACES (4.19/1,000 SF)

ZONING:

RO (RESIDENTIAL OFFICE)

RENTAL RATE:

\$20.00 PSF (FULL SERVICE)



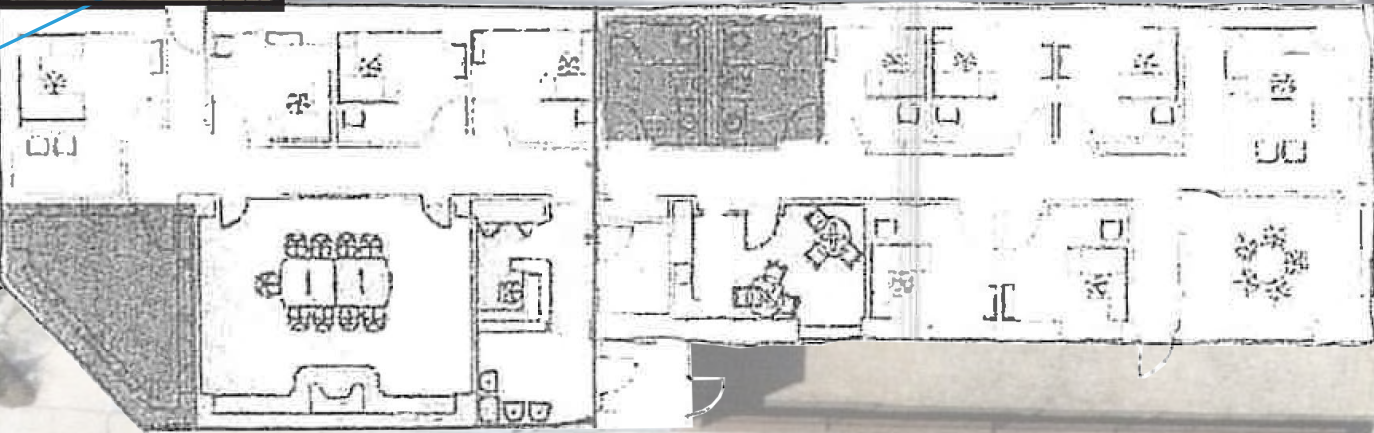
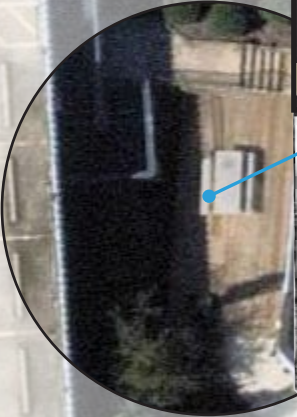
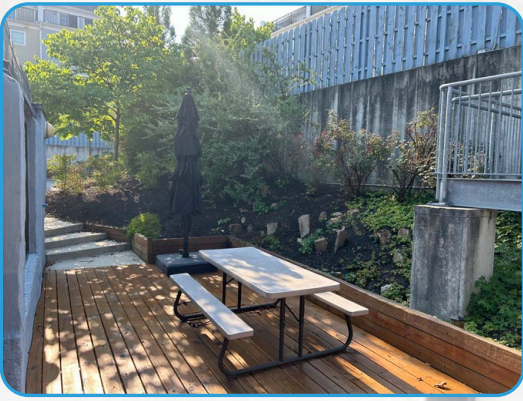
GOOGLE STREET VIEW



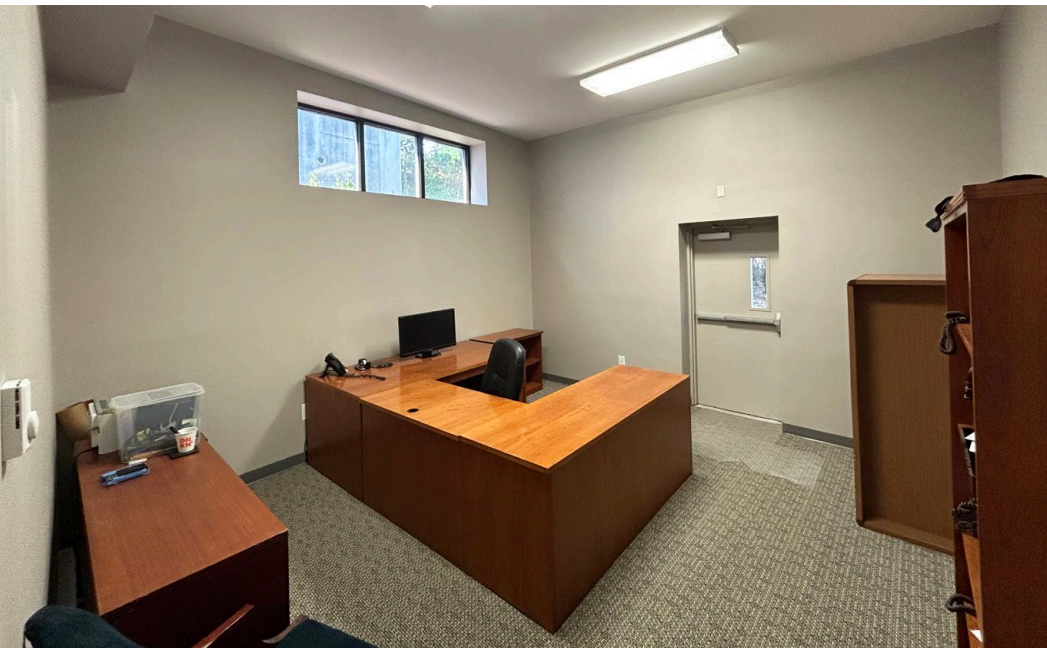
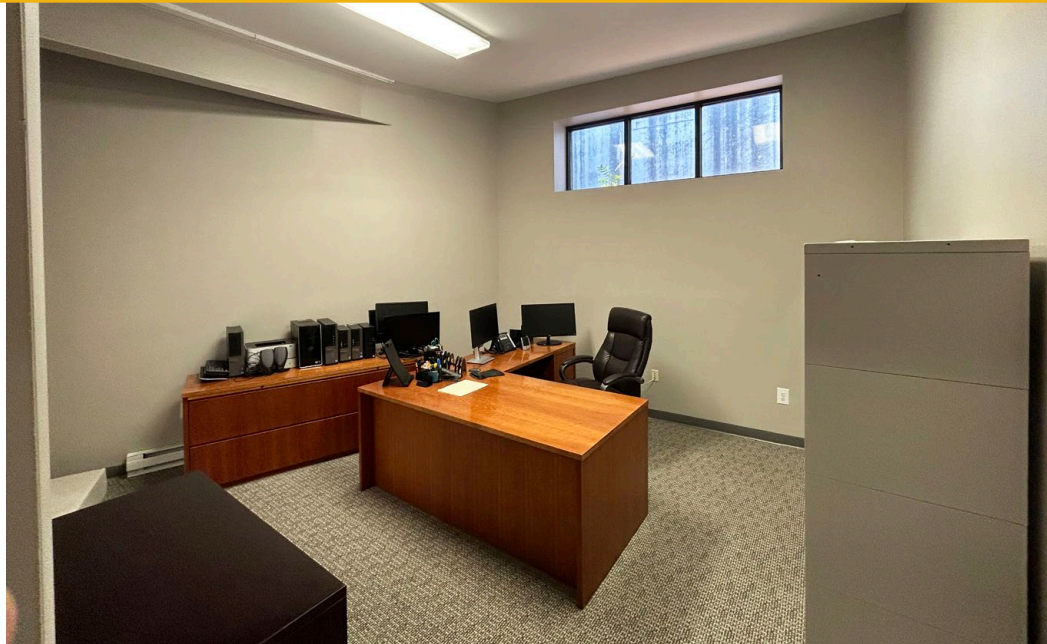
FLOOR PLAN



SUITE B: 2,350 SF



INTERIOR PHOTOS



TOWSON TRADE AREA



DEMOGRAPHICS

2024

RADIUS:

1 MILE

3 MILES

5 MILES

RESIDENTIAL POPULATION



242,232

124,042

326,001

DAYTIME POPULATION



38,638

134,171

320,907

AVERAGE HOUSEHOLD INCOME



\$110,187

\$134,581

\$126,546

NUMBER OF HOUSEHOLDS



8,187

49,730

132,782

MEDIAN AGE

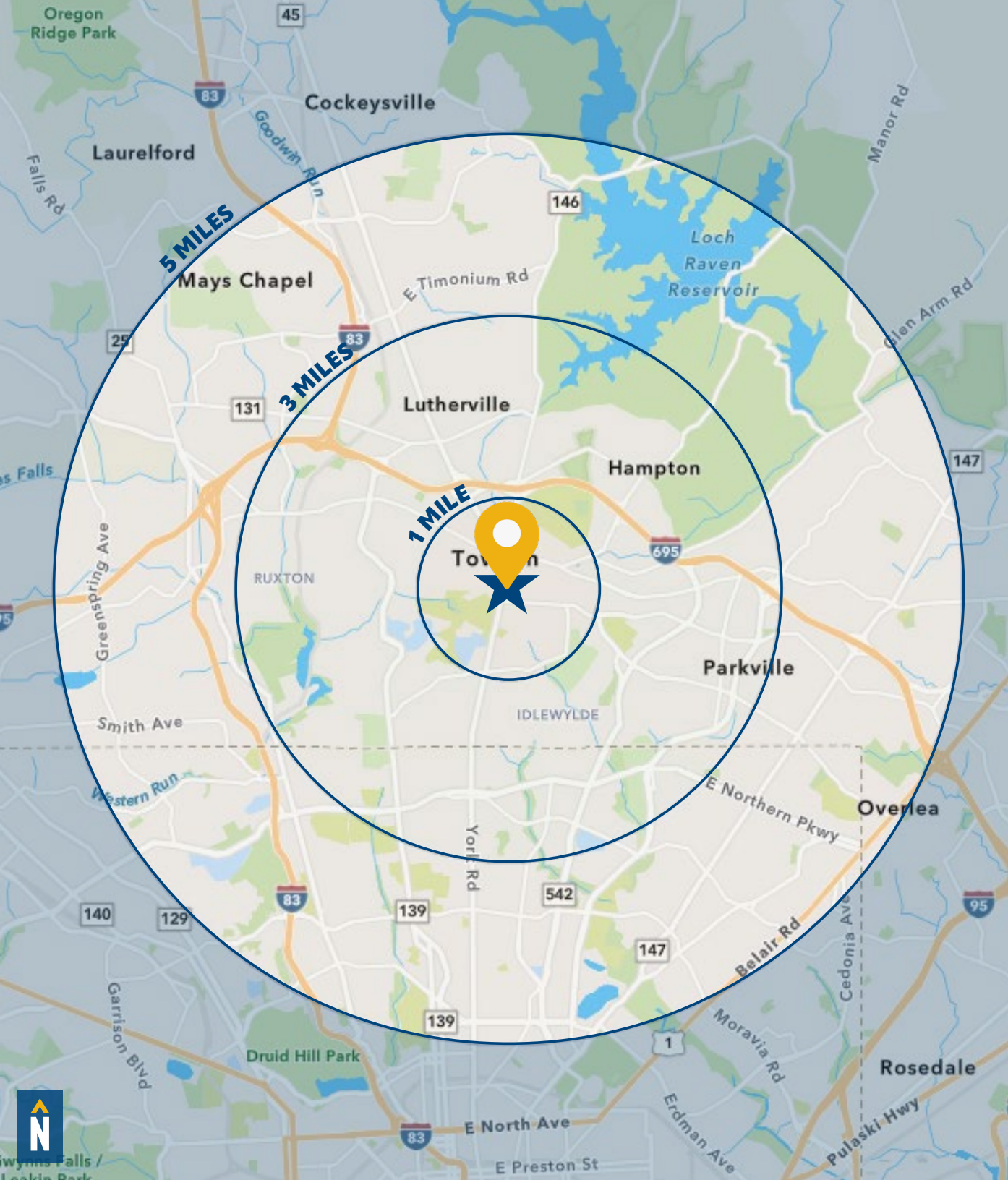


27.3

37.5

38.3

[FULL DEMOS REPORT](#)



FOR MORE INFO **CONTACT:**



PATRICK J. SMITH

REAL ESTATE ADVISOR

847.346.2701

PJSMITH@mackenziecommercial.com



MACKENZIE

COMMERCIAL REAL ESTATE SERVICES, LLC

410-821-8585

2328 W. Joppa Road, Suite 200

Lutherville, MD 21093

OFFICES IN: ANNAPOLIS, MD BALTIMORE, MD BEL AIR, MD COLUMBIA, MD **LUTHERVILLE, MD** CHARLOTTESVILLE, VA

www.MACKENZIECOMMERCIAL.com



VISIT **PROPERTY PAGE** FOR MORE INFORMATION.



No warranty or representation, expressed or implied, is made as to the accuracy of the information contained herein, and same is submitted subject to errors, omissions, change of price, rental or other conditions, withdrawal without notice, and to any specific listing conditions imposed by our principals.