



# FLEX BUILDING

1407 SHOEMAKER ROAD | BALTIMORE, MARYLAND 21209

FOR  
SALE



**MACKENZIE**

COMMERCIAL REAL ESTATE SERVICES, LLC

# PROPERTY OVERVIEW

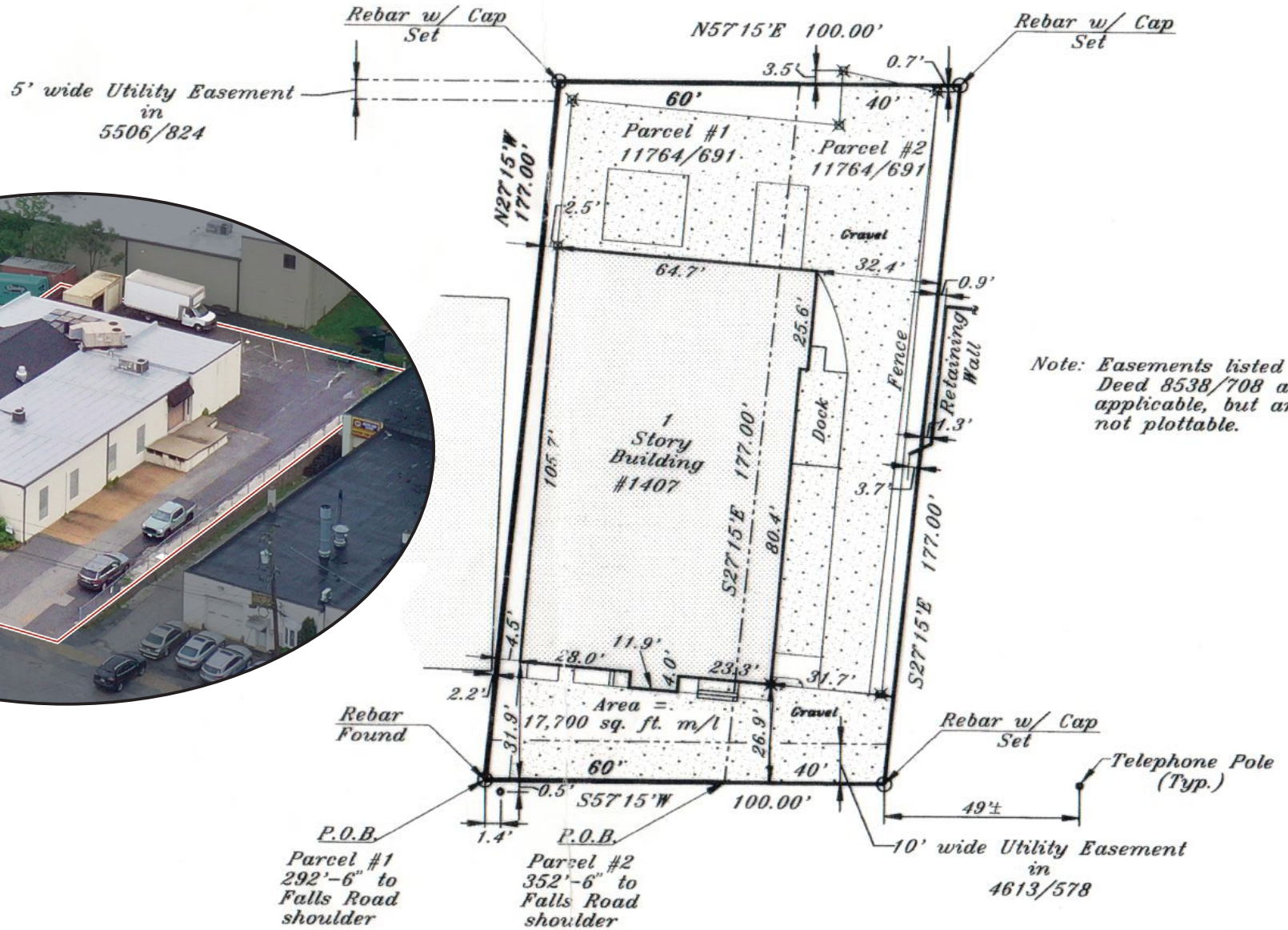
## HIGHLIGHTS:

- Both dock and drive-in door loading
- 3 Phase Electrical Service Power
- New roofs on both sides of the building
- Entire property is heated and air conditioned
- ML IM (Manufacturing, Light, Industrial, Major District) zoning
- Easy access to I-83, I-695, I-795
- Close proximity to both Downtown Baltimore as well as Baltimore County hubs like Towson, Timonium, Owings Mills and Pikesville

BUILDING SIZE:	6,770 SF ±
LOT SIZE:	.407 ACRES ±
CLEAR HEIGHT:	8'-13' ±
LOADING:	1 DOCK PLATFORM (2 TRUCK POSITIONS: 12' W x 8' H)
	1 DRIVE IN (12' W x 8' H)
ZONING:	ML IM (MANUFACTURING, LIGHT), [INDUSTRIAL, MAJOR DISTRICT]
SALE PRICE:	NEGOTIABLE



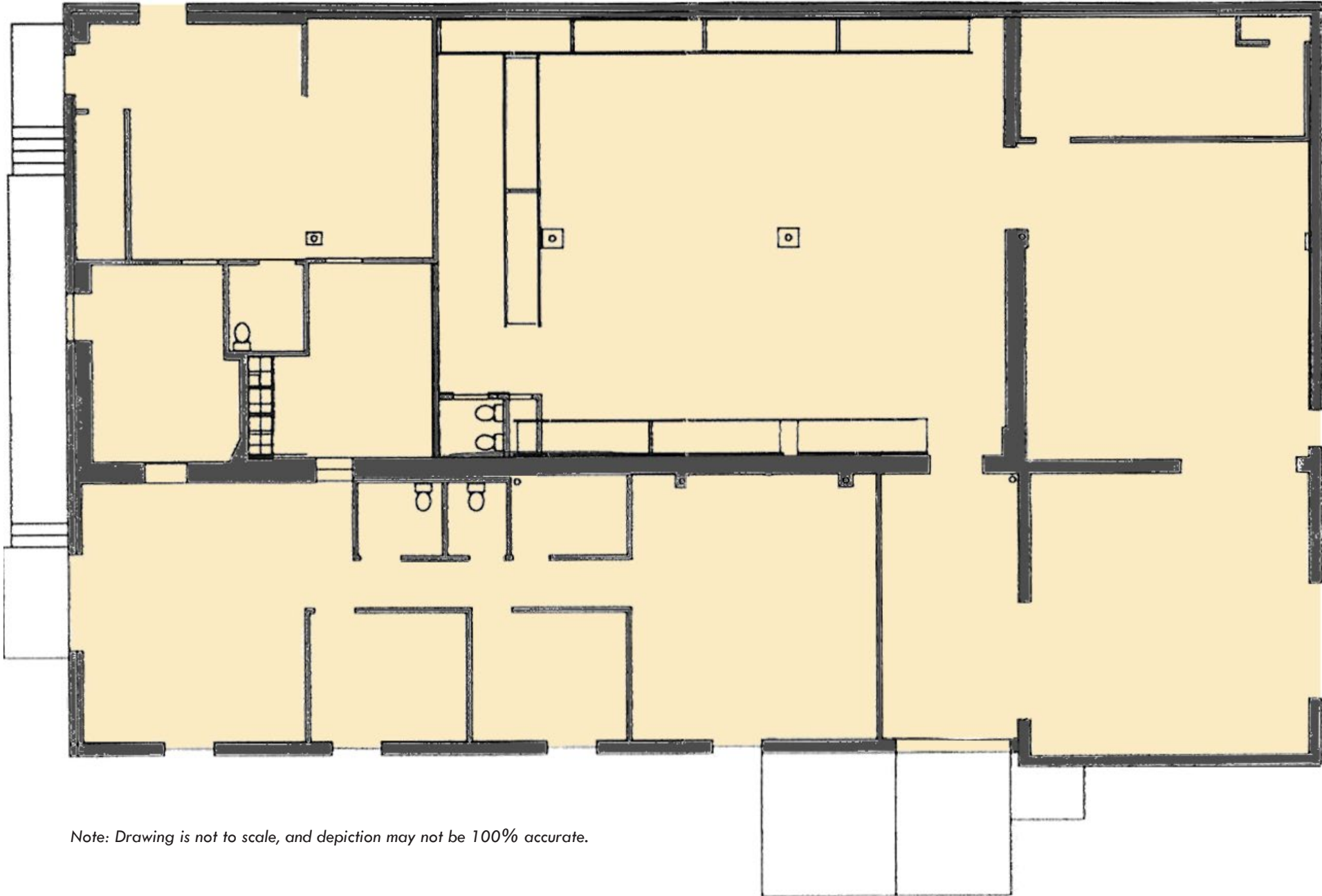
# SURVEY



**SHOEMAKER ROAD**  
(25' Right of Way)

Property lies in Flood Zone C

# FLOOR PLAN



Note: Drawing is not to scale, and depiction may not be 100% accurate.

# LOCAL BIRDSEYE



**COPPERMINE**  
RACQUET & FITNESS

**CFG BANK**

**TIAA**

**EARTH WOOD & FIRE**  
GARDENS & COAST-FRONT OUTDOOR

**SIMPLY BEAUTIFUL**  
FLOWERS & GIFTS

**MVK MILL VALLEY KITCHENS**

**FREEDOMCAR**

**BareHills Automotive**

**SITE**

**INTERSTATE 83**

**25**



# TRADE AREA

## DRIVING DISTANCE TO:

**INTERSTATE 83**  
1.7 MILES  
4 MIN. DRIVE

**INTERSTATE 695**  
3.0 MILES  
7 MIN. DRIVE

**INTERSTATE 795**  
6.5 MILES  
10 MIN. DRIVE

**BWI**  
BALTIMORE WASHINGTON INTERNATIONAL  
THUNDERBOLT MARSHALL AIRPORT  
22.4 MILES  
25 MIN. DRIVE

**PORT OF BALTIMORE**  
1706  
Helen Delich Bentley  
23.4 MILES  
27 MIN. DRIVE  
(FAIRFIELD MARINE TERMINAL)

**BALTIMORE, MD**  
8.4 MILES  
14 MIN.

**WASHINGTON, DC**  
51.4 MILES  
1 HR. 10 MIN.

**PHILADELPHIA, PA**  
107.0 MILES  
1 HR. 50 MIN.

**RICHMOND, VA**  
165.0 MILES  
2 HRS. 45 MIN.



# FOR MORE INFO CONTACT:



**ANDREW MEEDER, SIOR**

*SENIOR VICE PRESIDENT & PRINCIPAL*

**410.494.4881**

**AMEEDER@mackenziecommercial.com**



**MATTHEW CURRAN, SIOR**

*SENIOR VICE PRESIDENT & PRINCIPAL*

**443.573.3203**

**MCURRAN@mackenziecommercial.com**



**DANIEL HUDAK, SIOR**

*SENIOR VICE PRESIDENT & PRINCIPAL*

**443.573.3205**

**DHUDAK@mackenziecommercial.com**



VISIT **PROPERTY PAGE** FOR MORE INFORMATION.



**MACKENZIE**

COMMERCIAL REAL ESTATE SERVICES, LLC

**443-573-3200**

**111 S. Calvert Street  
Baltimore, MD 21202**

OFFICES IN: ANNAPOLIS, MD **BALTIMORE, MD** BEL AIR, MD COLUMBIA, MD LUTHERVILLE, MD CHARLOTTESVILLE, VA

**www.MACKENZIECOMMERCIAL.com**

*No warranty or representation, expressed or implied, is made as to the accuracy of the information contained herein, and same is submitted subject to errors, omissions, change of price, rental or other conditions, withdrawal without notice, and to any specific listing conditions imposed by our principals.*