



1330 INNOVATION STREET

MIDDLE RIVER, MARYLAND 21220

FOR
SUBLEASE



MACKENZIE

COMMERCIAL REAL ESTATE SERVICES, LLC

PROPERTY OVERVIEW

HIGHLIGHTS:

- Pickleball Facility
- Total of 8 indoor regulation-size courts
- Men's and Woman's Locker Rooms with climate controlled lockers and showers

BUILDING SIZE:

42,120 SF ±

AVAILABLE:

SUITES A-K: 27,130 SF ±

YEAR BUILT:

2019

DRIVE-IN DOORS:

8

PARKING:

SURFACE PARKING (108 SPACES)

ZONING:

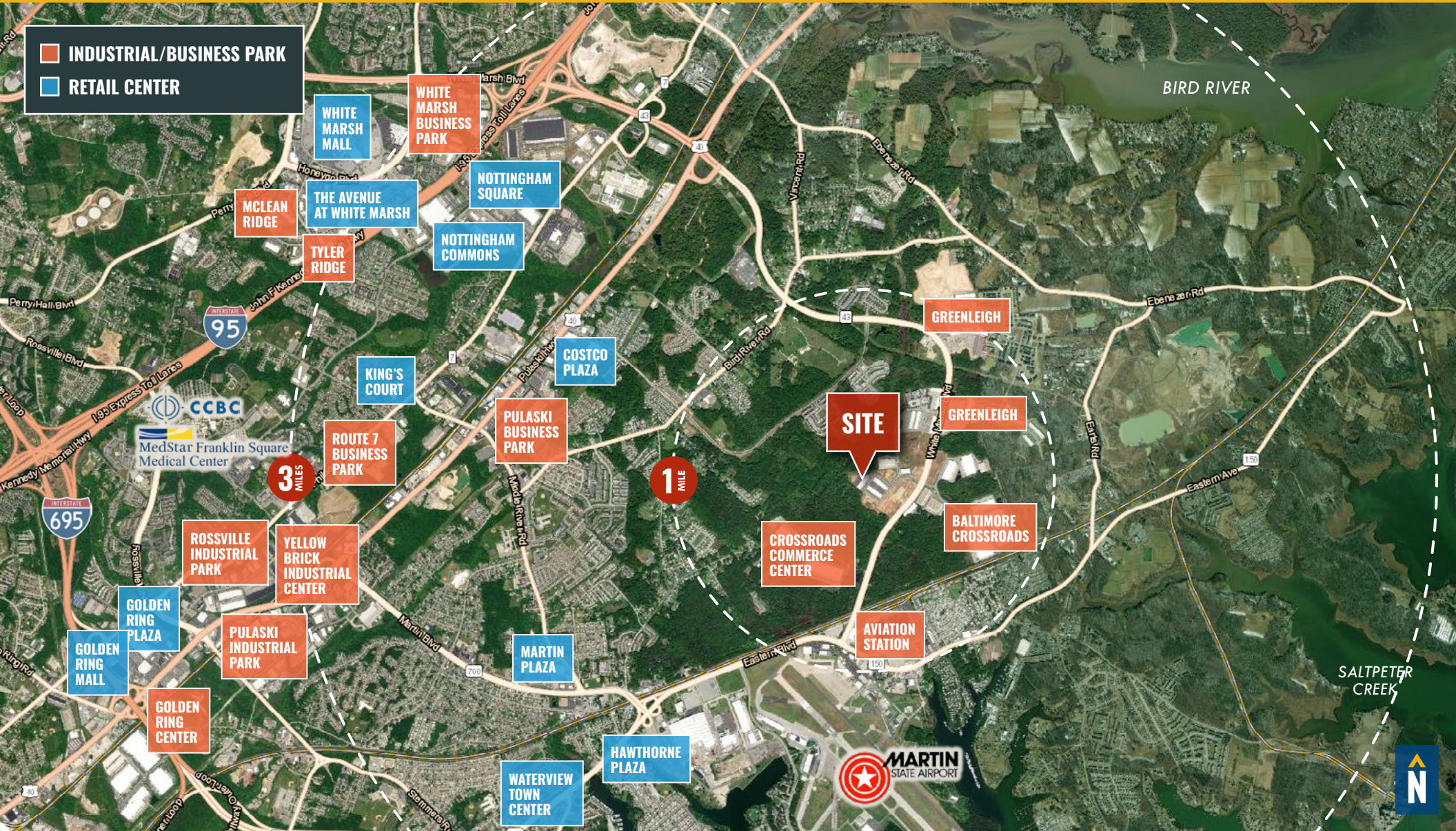
ML-IM

RENTAL RATE:

\$15.00/SF, NNN



LOCAL TRADE AREA



DEMOGRAPHICS

2023

RADIUS:

1 MILE

3 MILES

5 MILES

RESIDENTIAL POPULATION



1,935

28,919

73,487

DAYTIME POPULATION



4,143

55,185

130,576

AVERAGE HOUSEHOLD INCOME



\$132,334

\$102,692

\$107,101

NUMBER OF HOUSEHOLDS



1,807

23,438

59,839

MEDIAN AGE

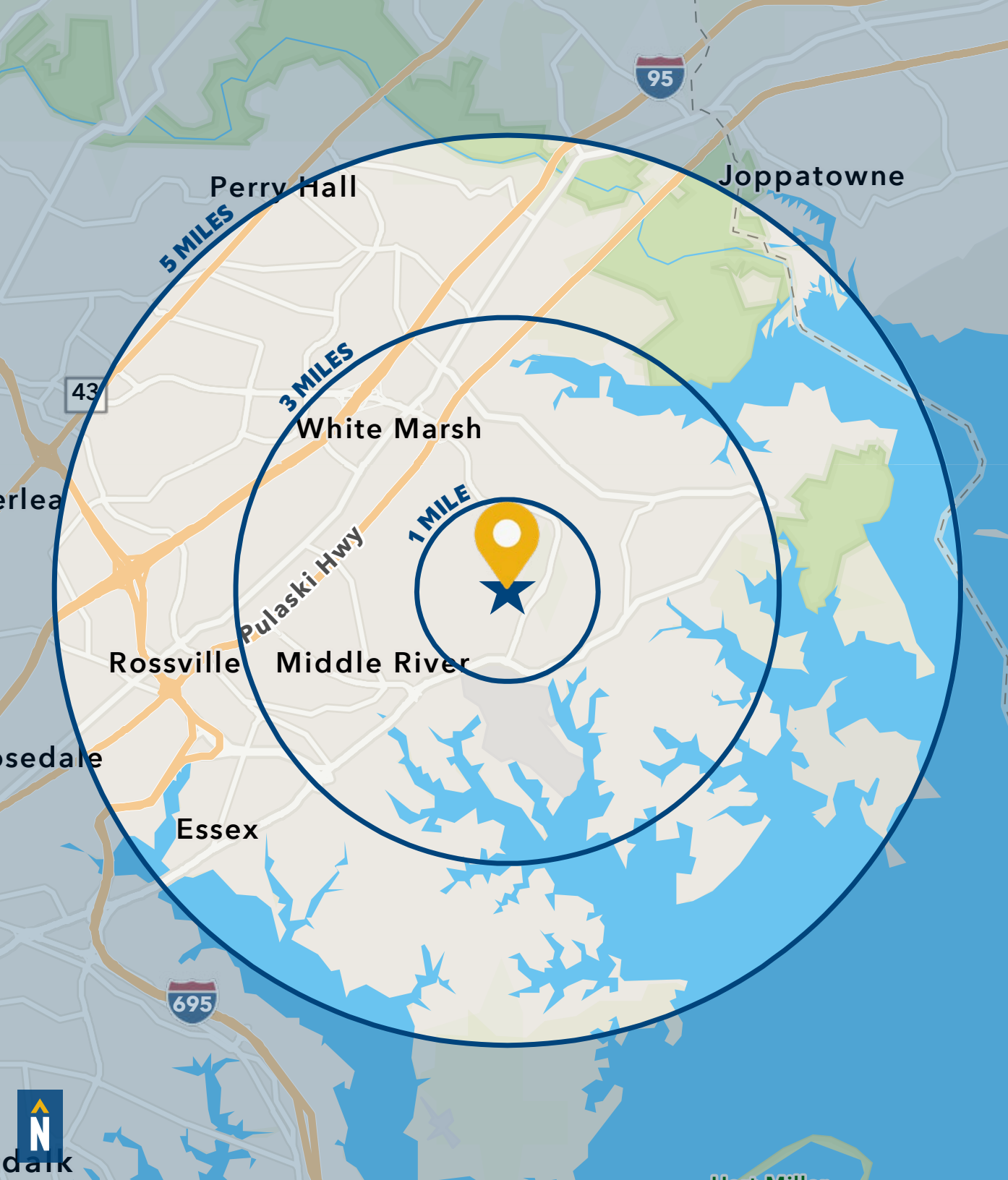


50.7

39.4

39.7

[FULL DEMOS REPORT](#)



FOR MORE INFO **CONTACT:**



DYLAN BOZEL
REAL ESTATE ADVISOR

410.494.4896
DZOZEL@mackenziecommercial.com



MATT MUELLER
SENIOR VICE PRESIDENT & PRINCIPAL

410.494.6658
MMUELLER@mackenziecommercial.com



MACKENZIE
COMMERCIAL REAL ESTATE SERVICES, LLC

410-821-8585
2328 W. Joppa Road, Suite 200
Lutherville, MD 21093

OFFICES IN: ANNAPOLIS, MD BALTIMORE, MD BEL AIR, MD COLUMBIA, MD **LUTHERVILLE, MD** CHARLOTTESVILLE, VA

www.MACKENZIECOMMERCIAL.com



VISIT **PROPERTY PAGE** FOR MORE INFORMATION.

No warranty or representation, expressed or implied, is made as to the accuracy of the information contained herein, and same is submitted subject to errors, omissions, change of price, rental or other conditions, withdrawal without notice, and to any specific listing conditions imposed by our principals.